

## What's New in EFI Metrix

Version 2020.2

**Copyright** © 2004 - 2020 by Electronics for Imaging, Inc. All Rights Reserved.

EFI Metrix 2020.2 | *What's New in EFI Metrix*

October 2020 / EFI Metrix 2020.2

Document Version 1

This publication is protected by copyright, and all rights are reserved. No part of it may be reproduced or transmitted in any form or by any means for any purpose without express prior written consent from Electronics for Imaging, Inc. Information in this document is subject to change without notice and does not represent a commitment on the part of Electronics for Imaging, Inc.

### **Patents**

This product may be covered by one or more of the following U.S. Patents: 4,716,978, 4,828,056, 4,917,488, 4,941,038, 5,109,241, 5,170,182, 5,212,546, 5,260,878, 5,276,490, 5,278,599, 5,335,040, 5,343,311, 5,398,107, 5,424,754, 5,442,429, 5,459,560, 5,467,446, 5,506,946, 5,517,334, 5,537,516, 5,543,940, 5,553,200, 5,563,689, 5,565,960, 5,583,623, 5,596,416, 5,615,314, 5,619,624, 5,625,712, 5,640,228, 5,666,436, 5,745,657, 5,760,913, 5,799,232, 5,818,645, 5,835,788, 5,859,711, 5,867,179, 5,940,186, 5,959,867, 5,970,174, 5,982,937, 5,995,724, 6,002,795, 6,025,922, 6,035,103, 6,041,200, 6,065,041, 6,112,665, 6,116,707, 6,122,407, 6,134,018, 6,141,120, 6,166,821, 6,173,286, 6,185,335, 6,201,614, 6,215,562, 6,219,155, 6,219,659, 6,222,641, 6,224,048, 6,225,974, 6,226,419, 6,238,105, 6,239,895, 6,256,108, 6,269,190, 6,271,937, 6,278,901, 6,279,009, 6,289,122, 6,292,270, 6,299,063, 6,310,697, 6,321,133, 6,327,047, 6,327,050, 6,327,052, 6,330,071, 6,330,363, 6,331,899, 6,340,975, 6,341,017, 6,341,018, 6,341,307, 6,347,256, 6,348,978, 6,356,359, 6,366,918, 6,369,895, 6,381,036, 6,400,443, 6,429,949, 6,449,393, 6,476,927, 6,490,696, 6,501,565, 6,519,053, 6,539,323, 6,543,871, 6,546,364, 6,549,294, 6,549,300, 6,550,991, 6,552,815, 6,559,958, 6,572,293, 6,590,676, 6,606,165, 6,633,396, 6,636,326, 6,643,317, 6,647,149, 6,657,741, 6,662,199, 6,678,068, 6,707,563, 6,741,262, 6,748,471, 6,753,845, 6,757,436, 6,757,440, 6,778,700, 6,781,596, 6,816,276, 6,825,943, 6,832,865, 6,836,342, RE33,973, RE36,947, D341,131, D406,117, D416,550, D417,864, D419,185, D426,206, D439,851, D444,793.

### **Trademarks**

The APPS logo, AutoCal, Auto-Count, Balance, Best, the Best logo, BESTColor, BioVu, BioWare, ColorPASS, Colorproof, ColorWise, Command WorkStation, CopyNet, Cretachrom, Cretaprint, the Cretaprint logo, Cretaprinter, Cretaroller, DockNet, Digital StoreFront, DirectSmile, DocBuilder, DocBuilder Pro, DocStream, DSFdesign Studio, Dynamic Wedge, EDOX, EFI, the EFI logo, Electronics For Imaging, Entrac, EPCount, EPPhoto, EPRegister, EPStatus, Estimate, ExpressPay, Fabrivu, Fast-4, Fiery, the Fiery logo, Fiery Driven, the Fiery Driven logo, Fiery JobFlow, Fiery JobMaster, Fiery Link, Fiery Prints, the Fiery Prints logo, Fiery Spark, FreeForm, Hagen, Inkintensity, Inkware, Jetrion, the Jetrion logo, LapNet, Logic, MiniNet, Monarch, MicroPress, OneFlow, Pace, PhotoXposure, PressVu, Printcafe, PrinterSite, PrintFlow, PrintMe, the PrintMe logo, PrintSmith, PrintSmith Site, Printstream, Print to Win, Prograph, PSI, PSI Flexo, Radius, Rastek, the Rastek logo, Remoteproof, RIPChips, RIP-While-Print, Screenproof, SendMe, Sincolor, Splash, Spot-On, TrackNet, UltraPress, UltraTex, UltraVu, UV Series 50, VisualCal, VUTEk, the VUTEk logo, and WebTools are trademarks of Electronics For Imaging, Inc. and/or its wholly owned subsidiaries in the U.S. and/or certain other countries.

All other terms and product names may be trademarks or registered trademarks of their respective owners, and are hereby acknowledged.

---

# Table of Contents

- Introduction ..... 4**
  - Contact Information ..... 4**
- What's New in EFI Metrix 2020.2..... 5**
  - Digital Cutting Machines..... 5**
  - Digital Cutting Tools and Cutter Operations ..... 5**
  - Spot Color Name Patterns for Cutter Operations ..... 6**
  - Cutter Alignment Marks ..... 6**
  - Irregular Shape Using Contour Line in Content File..... 7**
  - Cutting Complexity ..... 8**
  - Print or Export Reports with Black-and-white Layout Diagrams ..... 8**
  - Remove Instance from Layout ..... 8**
  - Cutting Machines and Standards..... 9**



## Introduction

EFI Metrix is an industry-leading job planning engine that transforms big data into actionable data in the most proven end-to-end integrated solution with a holistic view into manufacturing. With over 1,200 Metrix users in 25 countries and 12 years of continuous, aggressive development, Metrix is recognized as the de facto industry standard for dynamic, intelligent production planning and automated imposition.

### The Complete Planning and Imposition Solution

The EFI Metrix solution stores your presses, finishing equipment, stock, folds, users' logins and permissions, along with your manufacturing standards. Centralizing this information ensures uniformity, efficiency, and ultimately error-free planning and imposition across your entire organization. The EFI Metrix solution automatically and dynamically determines how many press sheets you need, the optimum layout for each press sheet, and even figures out for you the most cost-effective printing method, press, and sheet size.

## Contact Information

### EFI Support

<b>Web Site:</b>	<a href="http://communities.efi.com">communities.efi.com</a>
<b>US Phone:</b>	1.855.EFI.4HLP (1.855.334.4457)
<b>UK Phone:</b>	+44 (0) 800.783.2737
<b>EU Phone:</b>	+49.2102.745.4500
<b>E-Mail:</b>	<a href="mailto:metrix.support@efi.com">metrix.support@efi.com</a>

Metrix Support hours are 8AM CET to 5pm ET Monday – Friday. You may contact support at the above numbers or via our customer portal at [communities.efi.com](http://communities.efi.com).

**Note** For problems involving infrastructure (e.g., computers, networks, operating systems, backup software, printers, third-party software, etc.), contact the appropriate vendor. EFI cannot support these types of issues.

### EFI Professional Services

<b>US Phone:</b>	(651) 365-5321
<b>US Fax:</b>	(651) 365-5334
<b>E-Mail:</b>	<a href="mailto:ProfessionalServicesOperations@efi.com">ProfessionalServicesOperations@efi.com</a>

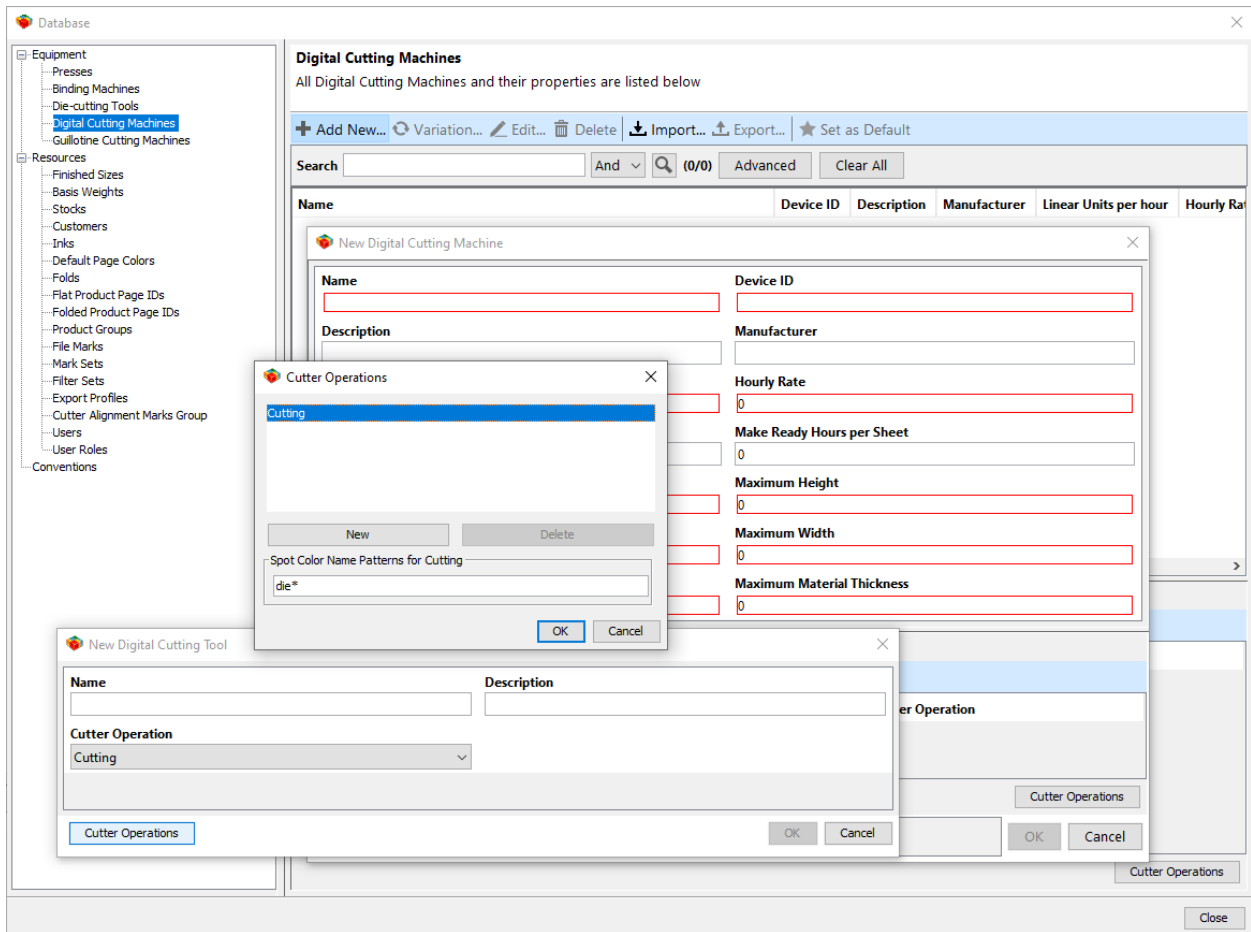
EFI Professional Services can help you perform EFI software installations, upgrades, and updates. This group can also help you implement, customize, and optimize your EFI software plus offer a range of training options.

## What's New in EFI Metrix 2020.2

This guide will introduce you to the new features and enhancements added to Metrix since the release of version 2020.1.

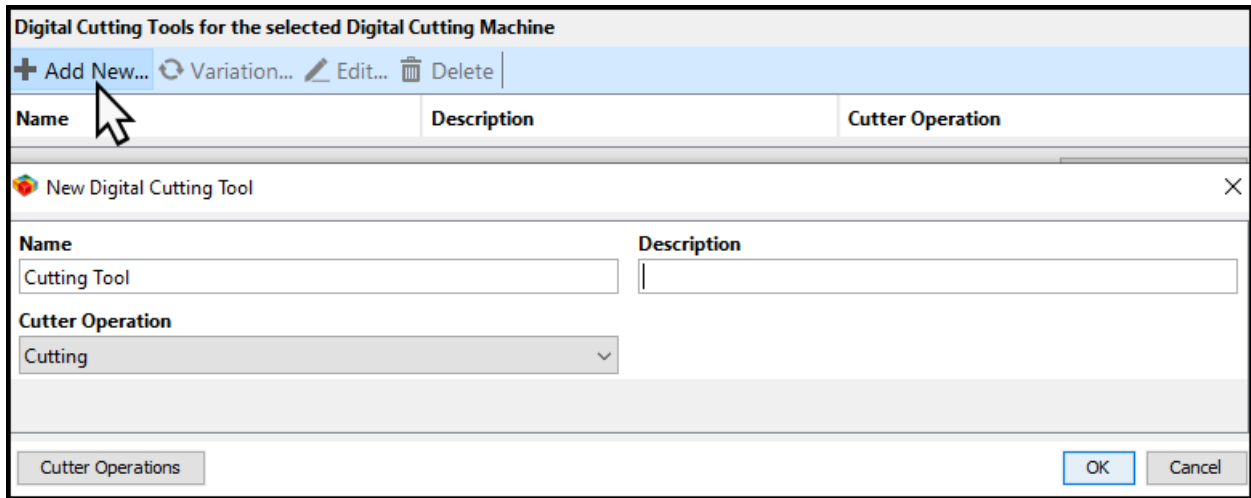
### Digital Cutting Machines

Metrix 2020.2 introduces the **Digital Cutting Machines** database equipment category. **Digital Cutting Machines** can cut complex shapes using a variety of tools whereas **Guillotine Cutting Machines** can cut only straight lines. Digital cutting paths are referred to as **Contour Lines**, and when a digital cutting machine is used in a project, Metrix calculates the cutting costs based on the time required to perform operations on all the **Contour Lines**.



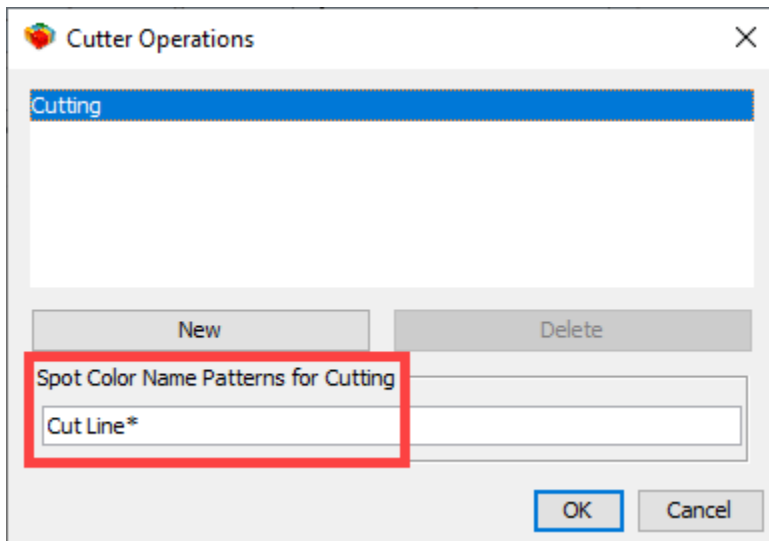
### Digital Cutting Tools and Cutter Operations

**Digital Cutting Machines** can perform a number of different **Cutter Operations**—cutting, creasing, perforating, scoring, etc.—depending on the tool that is used. Each digital cutting machine must have at least one tool.



## Spot Color Name Patterns for Cutter Operations

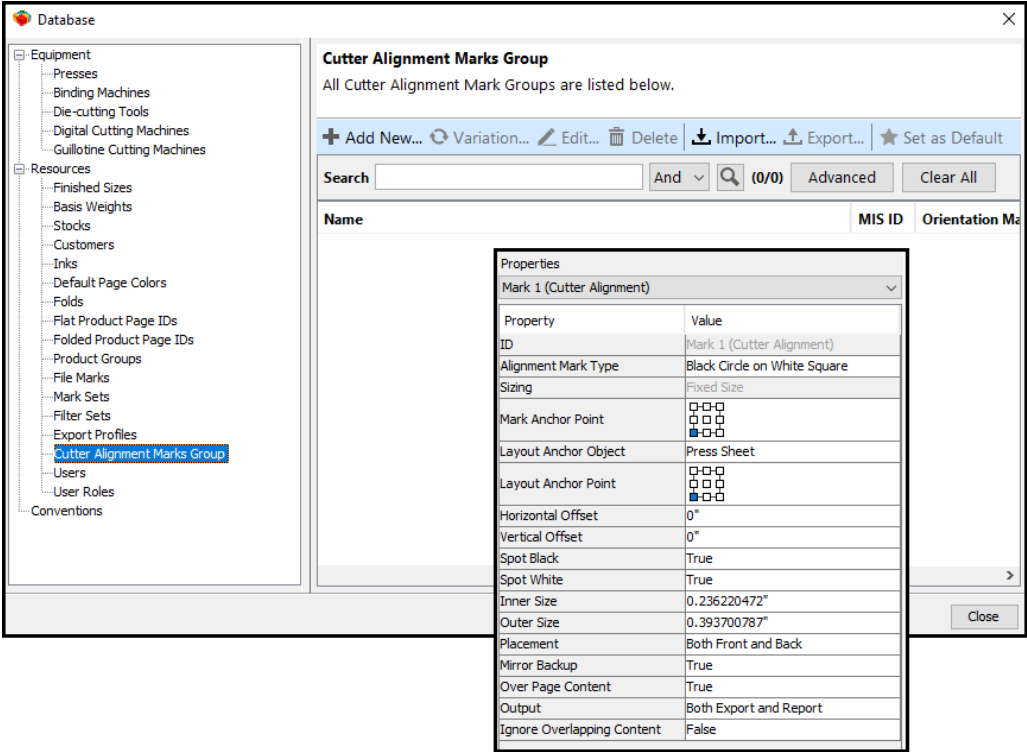
**Spot Color Name Patterns** are frequently used color names for different types of **Contour Lines**. For example, “Cut Line” might be used as the spot color name for the **Cutting** contour line in many products. Frequently used **Spot Color Name Patterns** are stored in the database, and Metrix uses these patterns to make a “best guess” as to which **Contour Line** names to associate with each **Cutter Operation**.



## Cutter Alignment Marks

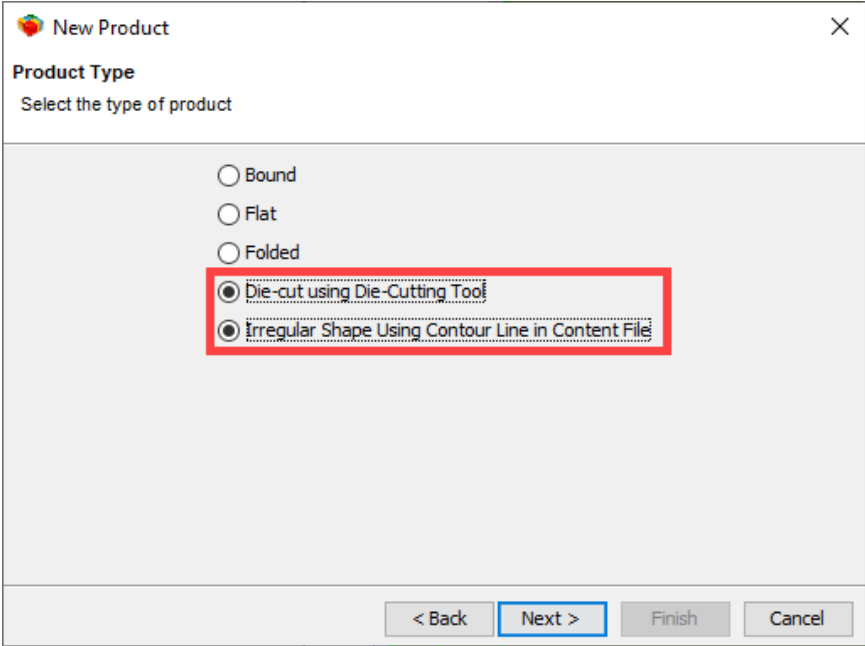
**Cutter Alignment Marks** are used by digital cutting machines to maintain registration across the sheet while performing operations such as cutting and creasing. This is especially important for very large sheets or flexible substrates.

**Cutter Alignment Marks** can be placed individually or as groups. The size, type, and relative placement of **Cutter Alignment Mark Groups** are controlled by a set of rules defined in the database. Once the rules are configured, the user adds a **Cutter Alignment Marks Group** to a layout and then the algorithm automatically places marks around each instance. An orientation mark is placed in the specified corner of the sheet to prevent accidental improper rotation of nearly symmetrical jobs.



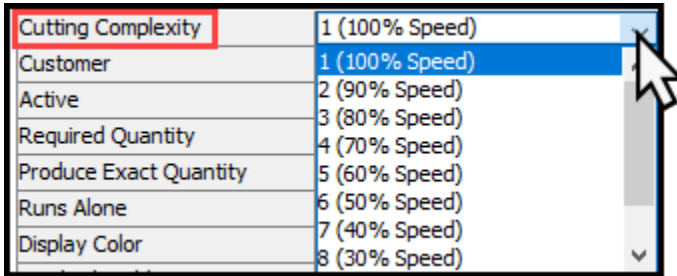
### Irregular Shape Using Contour Line in Content File

The Die-cut using Dieline in Content File product type in the New Product Wizard is now called Irregular Shape Using Contour Line in Content File. This new option is designed for products that use a digital cutting machine, but can be used to add die-cut products without a die cutting tool.



## Cutting Complexity

**Cutting Complexity** is a user-defined **Product Property** that tells Metrix how difficult a product is to cut when a **Digital Cutting Machine** has been selected for the project. Cutting costs are based on the amount of time it takes to cut a product. The default Cutting Complexity for all products is “1 (100% speed), which means the Digital Cutting Machine can operate at full speed when cutting this product. If the cutting contour line of a product is very complex, the Digital Cutting Machine may need to move at a slower pace, for example, “5 (60% speed).”

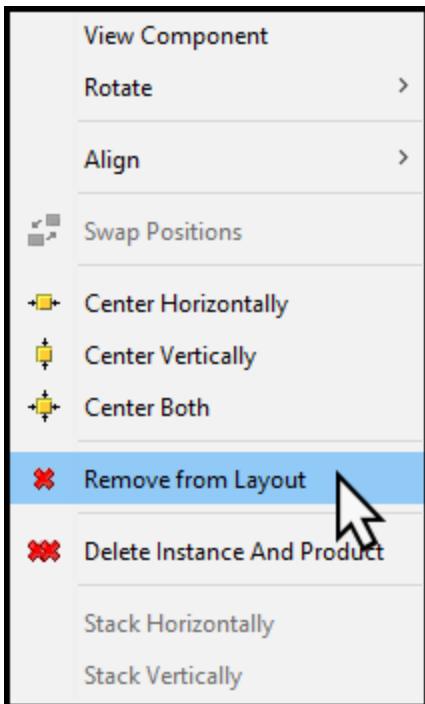


## Print or Export Reports with Black-and-white Layout Diagrams

You can now print layout diagrams in black and white by selecting **Layout Diagrams – No Color** and then de-selecting **Layout Diagrams – Color Component Backgrounds**, **Layout Diagrams – Shade Page Bleeds**, and **Layout Diagrams – Show Previews** in the **Export Report** dialog.

## Remove Instance from Layout

The **Delete** option that appeared in the contextual menu when you right-clicked on an instance in the **Layout View** is renamed to **Remove from Layout**.





## Cutting Machines and Standards

**Cutting Machine** information is no longer shown in **Standards**.