

What's New in EFI Metrix

Version 2020.1

Copyright © 2004 - 2020 by Electronics for Imaging, Inc. All Rights Reserved.

EFI Metrix 2020.1 | *What's New in EFI Metrix*

June 2020 / EFI Metrix 2020.1

Document Version 1

This publication is protected by copyright, and all rights are reserved. No part of it may be reproduced or transmitted in any form or by any means for any purpose without express prior written consent from Electronics for Imaging, Inc. Information in this document is subject to change without notice and does not represent a commitment on the part of Electronics for Imaging, Inc.

Patents

This product may be covered by one or more of the following U.S. Patents: 4,716,978, 4,828,056, 4,917,488, 4,941,038, 5,109,241, 5,170,182, 5,212,546, 5,260,878, 5,276,490, 5,278,599, 5,335,040, 5,343,311, 5,398,107, 5,424,754, 5,442,429, 5,459,560, 5,467,446, 5,506,946, 5,517,334, 5,537,516, 5,543,940, 5,553,200, 5,563,689, 5,565,960, 5,583,623, 5,596,416, 5,615,314, 5,619,624, 5,625,712, 5,640,228, 5,666,436, 5,745,657, 5,760,913, 5,799,232, 5,818,645, 5,835,788, 5,859,711, 5,867,179, 5,940,186, 5,959,867, 5,970,174, 5,982,937, 5,995,724, 6,002,795, 6,025,922, 6,035,103, 6,041,200, 6,065,041, 6,112,665, 6,116,707, 6,122,407, 6,134,018, 6,141,120, 6,166,821, 6,173,286, 6,185,335, 6,201,614, 6,215,562, 6,219,155, 6,219,659, 6,222,641, 6,224,048, 6,225,974, 6,226,419, 6,238,105, 6,239,895, 6,256,108, 6,269,190, 6,271,937, 6,278,901, 6,279,009, 6,289,122, 6,292,270, 6,299,063, 6,310,697, 6,321,133, 6,327,047, 6,327,050, 6,327,052, 6,330,071, 6,330,363, 6,331,899, 6,340,975, 6,341,017, 6,341,018, 6,341,307, 6,347,256, 6,348,978, 6,356,359, 6,366,918, 6,369,895, 6,381,036, 6,400,443, 6,429,949, 6,449,393, 6,476,927, 6,490,696, 6,501,565, 6,519,053, 6,539,323, 6,543,871, 6,546,364, 6,549,294, 6,549,300, 6,550,991, 6,552,815, 6,559,958, 6,572,293, 6,590,676, 6,606,165, 6,633,396, 6,636,326, 6,643,317, 6,647,149, 6,657,741, 6,662,199, 6,678,068, 6,707,563, 6,741,262, 6,748,471, 6,753,845, 6,757,436, 6,757,440, 6,778,700, 6,781,596, 6,816,276, 6,825,943, 6,832,865, 6,836,342, RE33,973, RE36,947, D341,131, D406,117, D416,550, D417,864, D419,185, D426,206, D439,851, D444,793.

Trademarks

The APPS logo, AutoCal, Auto-Count, Balance, Best, the Best logo, BESTColor, BioVu, BioWare, ColorPASS, Colorproof, ColorWise, Command WorkStation, CopyNet, Cretachrom, Cretaprint, the Cretaprint logo, Cretaprinter, Cretaroller, DockNet, Digital StoreFront, DirectSmile, DocBuilder, DocBuilder Pro, DocStream, DSFdesign Studio, Dynamic Wedge, EDOX, EFI, the EFI logo, Electronics For Imaging, Entrac, EPCount, EPPhoto, EPRegister, EPStatus, Estimate, ExpressPay, Fabrivu, Fast-4, Fiery, the Fiery logo, Fiery Driven, the Fiery Driven logo, Fiery JobFlow, Fiery JobMaster, Fiery Link, Fiery Prints, the Fiery Prints logo, Fiery Spark, FreeForm, Hagen, Inkintensity, Inkware, Jetrion, the Jetrion logo, LapNet, Logic, MiniNet, Monarch, MicroPress, OneFlow, Pace, PhotoXposure, PressVu, Printcafe, PrinterSite, PrintFlow, PrintMe, the PrintMe logo, PrintSmith, PrintSmith Site, Printstream, Print to Win, Prograph, PSI, PSI Flexo, Radius, Rastek, the Rastek logo, Remoteproof, RIPChips, RIP-While-Print, Screenproof, SendMe, Sincolor, Splash, Spot-On, TrackNet, UltraPress, UltraTex, UltraVu, UV Series 50, VisualCal, VUTEk, the VUTEk logo, and WebTools are trademarks of Electronics For Imaging, Inc. and/or its wholly owned subsidiaries in the U.S. and/or certain other countries.

All other terms and product names may be trademarks or registered trademarks of their respective owners, and are hereby acknowledged.

Table of Contents

Introduction	4
Contact Information	4
What's New in EFI Metrix 2020.1	5
Mac OS X 10.15 (Catalina) Support.....	5
Cutting Machine Name Change.....	5
New Guillotine Cutting Machines Dialog	5
Display Numbers and Currency Using System Locale Option.....	6
Add Product Clones to Layout Option	6
Export to CSV Option.....	7
Swap Products without Deleting Dimensions	7
Remove from Layout Option	8

Introduction

EFI Metrix is an industry-leading job planning engine that transforms big data into actionable data in the most proven end-to-end integrated solution with a holistic view into manufacturing. With over 1,200 Metrix users in 25 countries and 12 years of continuous, aggressive development, Metrix is recognized as the de facto industry standard for dynamic, intelligent production planning and automated imposition.

The Complete Planning and Imposition Solution

The EFI Metrix solution stores your presses, finishing equipment, stock, folds, users' logins and permissions, along with your manufacturing standards. Centralizing this information ensures uniformity, efficiency, and ultimately error-free planning and imposition across your entire organization. The EFI Metrix solution automatically and dynamically determines how many press sheets you need, the optimum layout for each press sheet, and even figures out for you the most cost-effective printing method, press, and sheet size.

Contact Information

EFI Support

Web Site:	communities.efi.com
US Phone:	1.855.EFI.4HLP (1.855.334.4457)
UK Phone:	+44 (0) 800.783.2737
EU Phone:	+49.2102.745.4500
E-Mail:	metrix.support@efi.com

Metrix Support hours are 8AM CET to 5pm ET Monday – Friday. You may contact support at the above numbers or via our customer portal at communities.efi.com.

Note For problems involving infrastructure (e.g., computers, networks, operating systems, backup software, printers, third-party software, etc.), contact the appropriate vendor. EFI cannot support these types of issues.

EFI Professional Services

US Phone:	(651) 365-5321
US Fax:	(651) 365-5334
E-Mail:	ProfessionalServicesOperations@efi.com

EFI Professional Services can help you perform EFI software installations, upgrades, and updates. This group can also help you implement, customize, and optimize your EFI software plus offer a range of training options.

What's New in EFI Metrix 2020.1

This guide will introduce you to the new features and enhancements added to Metrix since the release of version 2019.2.

Mac OS X 10.15 (Catalina) Support

Metrix 2020.1 introduces support for Mac OS X 10.15.

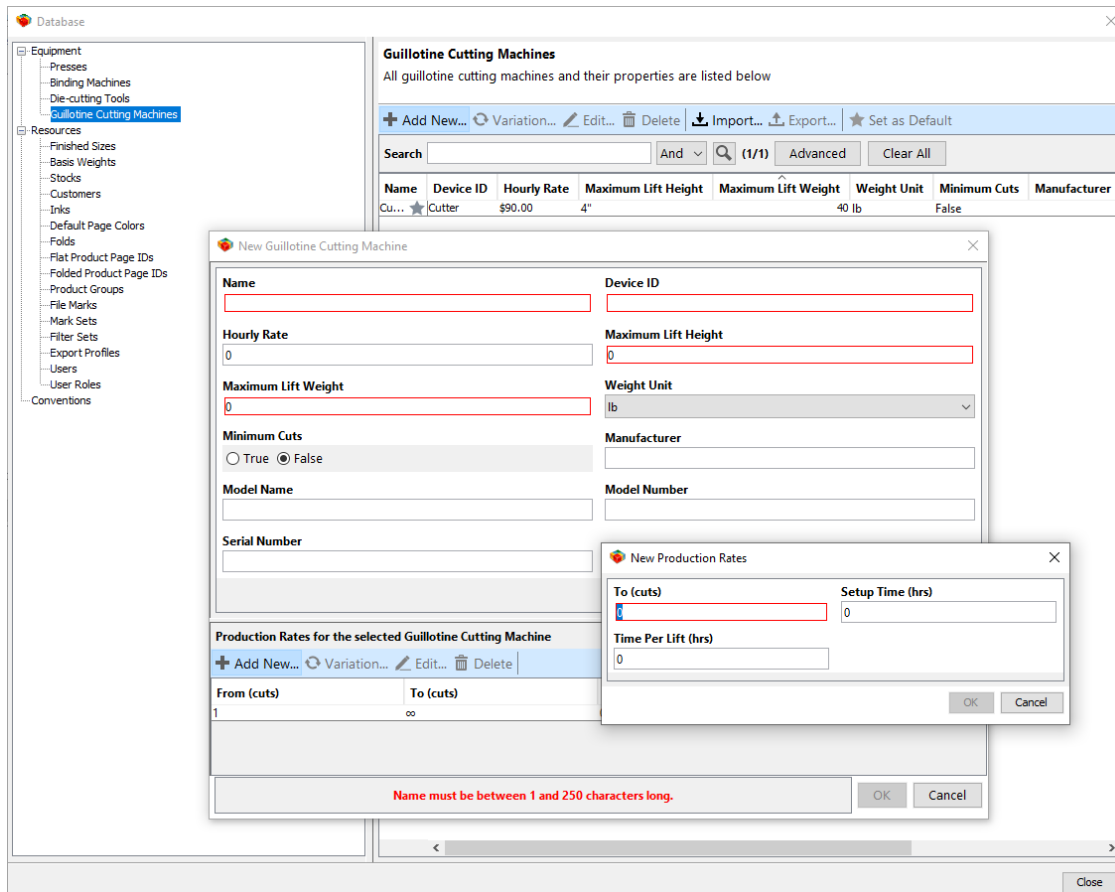
Note eFlow LIM is unable to run on Mac OS X 10.15 because Mac OS X 10.15 (Catalina) does not support 32-bit applications. eFlow LIM will run on Mac OS X 10.12 (Sierra) through OS X 10.14 (Mojave).

Cutting Machine Name Change

Cutting Machines are now referred to as Guillotine Cutting Machines.

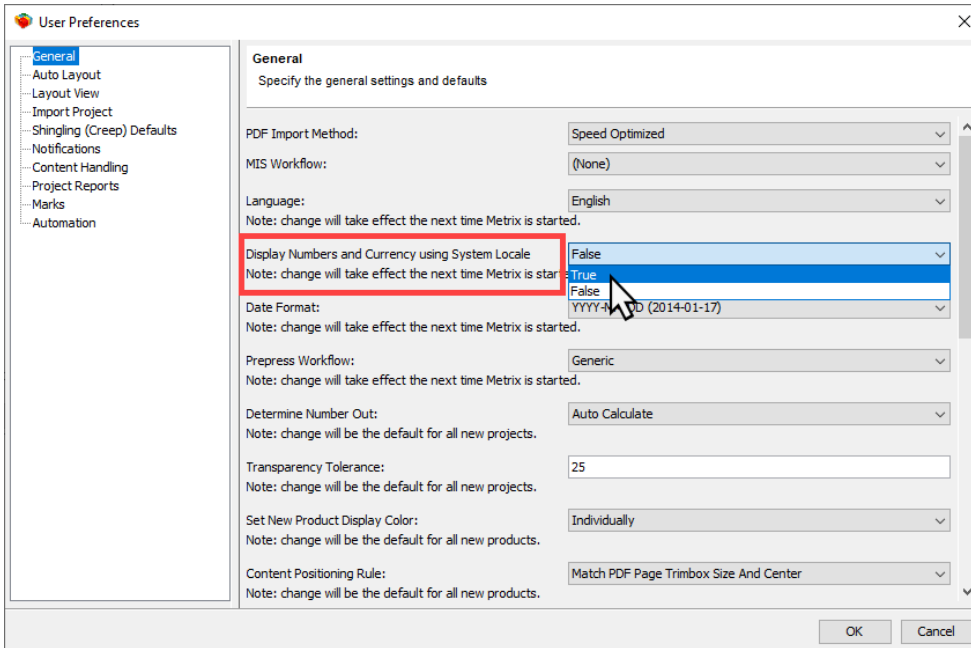
New Guillotine Cutting Machines Dialog

The new **Guillotine Cutting Machines** dialog incorporates a sleek, user-friendly design that simplifies the process of adding, editing, importing, and exporting guillotine cutting machines in the Metrix database.



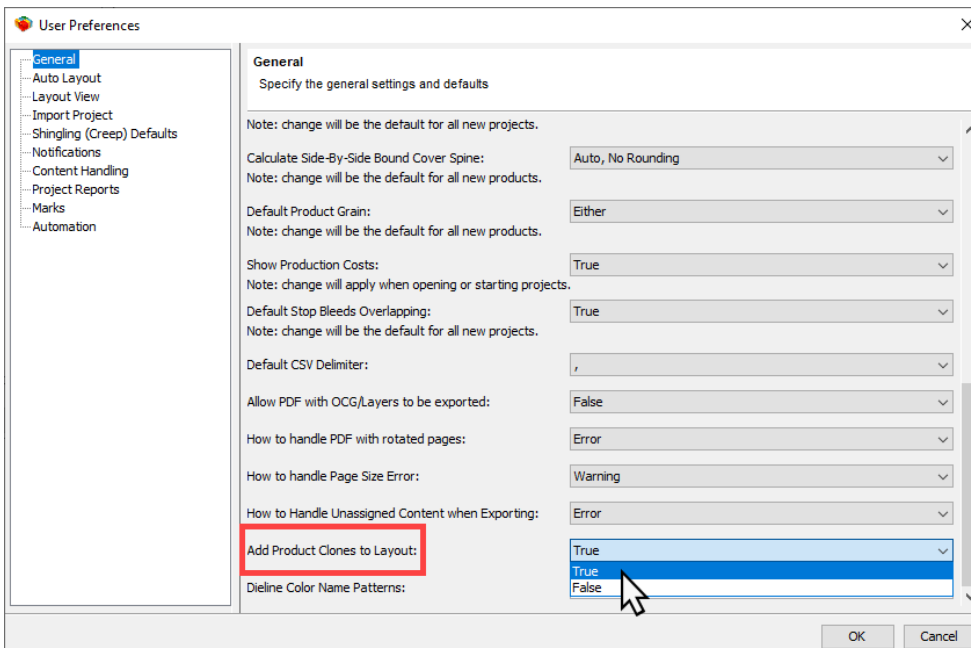
Display Numbers and Currency Using System Locale Option

Display Numbers and Currency Using System Locale is a new **User Preference** on the **General** tab, which allows Metrix to display numbers and currency based on the OS System Locale when the selected language is not supported by Metrix. The field is set to **False** by default, and you can set the field to **True** and restart Metrix to enable the feature.



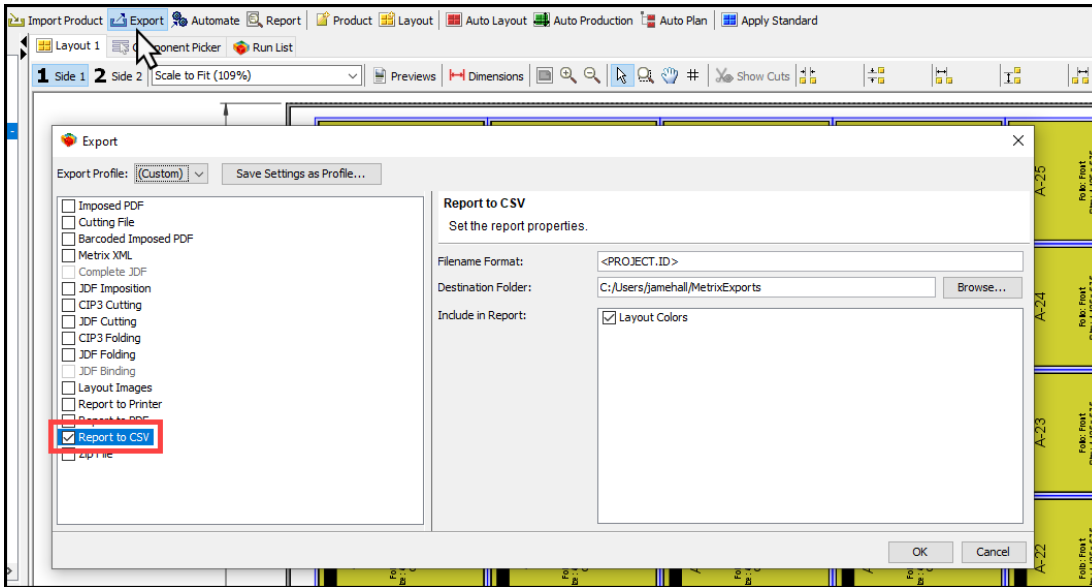
Add Product Clones to Layout Option

Add Product Clones to Layout is a new **User Preference** on the **General** tab that allows clones of a product assigned to a layout to be placed on the existing layout. The field is set to **True** by default, and if you change the option to **False**, then the clones of a product will not be assigned to any layout.



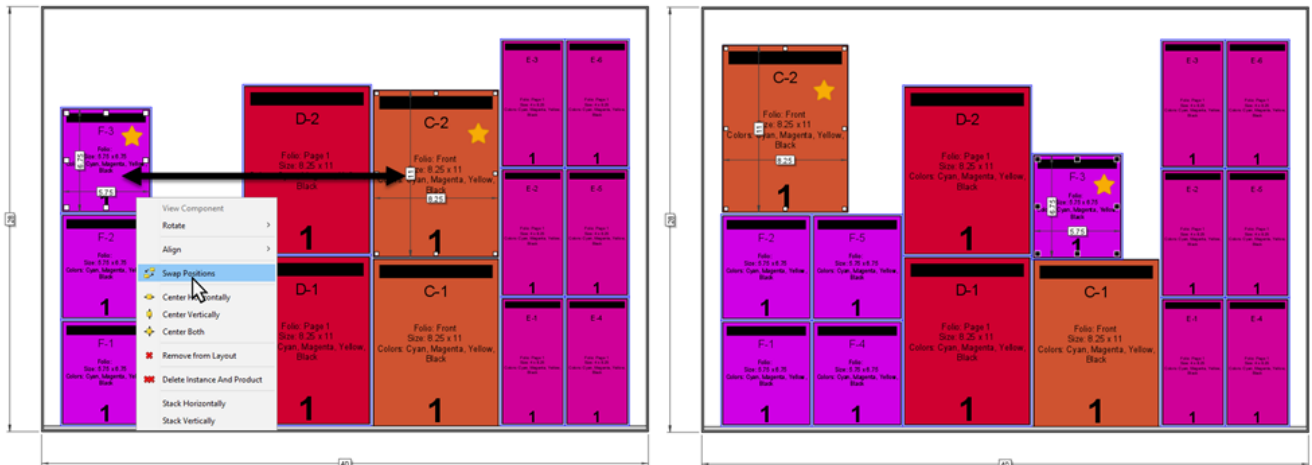
Export to CSV Option

You can now export a layout to a **CSV** file by selecting the **Report to CSV** option in the Export window.



Swap Products without Deleting Dimensions

Metrix 2020.1 gives you the ability to swap component instance positions on a layout without deleting the existing dimensions. This new feature makes it easy for you to rearrange a layout without needing to re-add dimensions.



Remove from Layout Option

Remove from Layout added to the right-click options for individual and multi-selected products or components. Using this new feature, products and components can be removed from layouts in the **Project Explorer**, or in the Layout View, without deleting them from the project.

